

# APJPH Editorial Report

September  
2018

Submitted to the Asia Pacific Consortium for  
Public Health

Prepared by:

Prof. Dr. Wah Yun Low, Editor-in-Chief  
lowwy@um.edu.my

Editorial Office

Bairave Shunmugam, Editorial Officer  
sbairave@um.edu.my  
apjphoffice@gmail.com

SAGE Office

Tara Newby, Associate Publishing Editor  
Tara.Newby@sagepub.com

## *Asia Pacific Journal of Public Health*

### ***Editorial Board Meeting***

*Date: 12<sup>th</sup> September 2018*

*Time: 12:30 – 1:30 pm*

*Venue: The Magellan Sutura Resort  
Kota Kinabalu, Sabah  
Malaysia*



# Executive Summary

This report summarizes *Asia Pacific Journal of Public Health's* January 2018 through June 2018 performance. Below is a snapshot of the journal's key performance metrics.

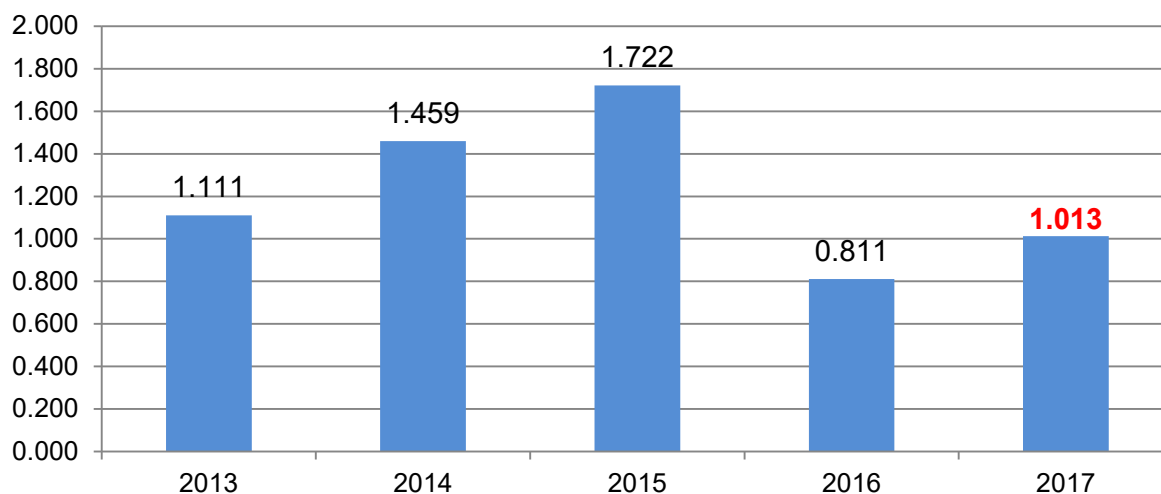
## Performance Metrics

Submissions	<ul style="list-style-type: none"><li>• 464 manuscript submissions in 2018 YTD<ul style="list-style-type: none"><li>✓ 685 manuscript submissions in 2017, a 1.2% decrease from 2016</li></ul></li><li>• 12% acceptance rate in 2017<ul style="list-style-type: none"><li>✓ 11% acceptance rate in 2016</li></ul></li><li>• 68 days average time to first decision in 2018 YTD<ul style="list-style-type: none"><li>✓ 58 days average time to first decision in 2017</li></ul></li></ul>
Content Published	<ul style="list-style-type: none"><li>• 505 pages published in 2018 YTD<ul style="list-style-type: none"><li>✓ 8 issues consisting of 693 pages published in 2017</li></ul></li><li>• 26 days average from transmittal to Production to OnlineFirst publication in 2018 YTD<ul style="list-style-type: none"><li>✓ 30 days average from transmittal to Production to OnlineFirst publication in 2017</li></ul></li></ul>
Circulation	<ul style="list-style-type: none"><li>• 8,171 total circulation in 2018 YTD<ul style="list-style-type: none"><li>✓ 8,434 total circulation in 2017</li></ul></li></ul>
Online Usage	<ul style="list-style-type: none"><li>• 51,702 full-text downloads in 2018 YTD<ul style="list-style-type: none"><li>✓ 104,065 full-text downloads in 2017</li></ul></li></ul>
Impact Factor	<ul style="list-style-type: none"><li>• 2017 Impact Factor is 1.013<ul style="list-style-type: none"><li>✓ 2016 Impact Factor was 0.811</li></ul></li><li>• 2017 5-year Impact Factor is 1.120</li><li>• Ranking in Public, Environmental &amp; Occupational Health (Sci): 154/180</li><li>• Ranking in Public, Environmental &amp; Occupational Health (Ssci): 124/156</li></ul>
Marketing	<ul style="list-style-type: none"><li>• 2016 commercial sales revenue of \$55,200<ul style="list-style-type: none"><li>• 2017 YTD commercial sales revenue of \$45,7703,917 followers to date on the SAGE Health Twitter channel</li><li>• Top Altmetric score of 55 for the article "A Mock Randomized Controlled Trial With Audience Response Technology for Teaching and Learning Epidemiology"</li><li>• 142 articles claimed on Kudos, netting 4,962 Kudos article page views</li><li>• 1,115 New Content alert registrants in 2017</li><li>• 1,086 New Content alert registrants in 2018 YTD</li></ul></li></ul>

## 1. Impact Factor

APJPH attained an impact factor of 1.013 for year 2017, an increase from 0.811 in 2016. This put APJPH at 154 out of 180 in Public, Environment & Occupational Health (Science) category and 124 out of the 156 journals in the Public, Environmental & Occupational Health (Social Science).

**Impact Factor by Year**



	2015	2016	2017	Percent Change 2015-2016
Impact Factor	1.722	0.811	<b>1.013</b>	25%*
Ranking in Public, Environmental & Occupational Health (Sci)	80/173	157/176	<b>154/180</b>	N/A
Ranking in Public, Environmental & Occupational Health (Ssci)	54/153	132/157	<b>124/156</b>	N/A
Cites to Recent Items	217	344	<b>451</b>	31%
Citable Items	126	424	<b>445</b>	5%
Total Citations	1,411	1,189	<b>1284</b>	8%
Immediacy Index	0.313	0.444	<b>0.652</b>	47%
5-Year Impact Factor	2.087	1.138	<b>1.120</b>	-2%

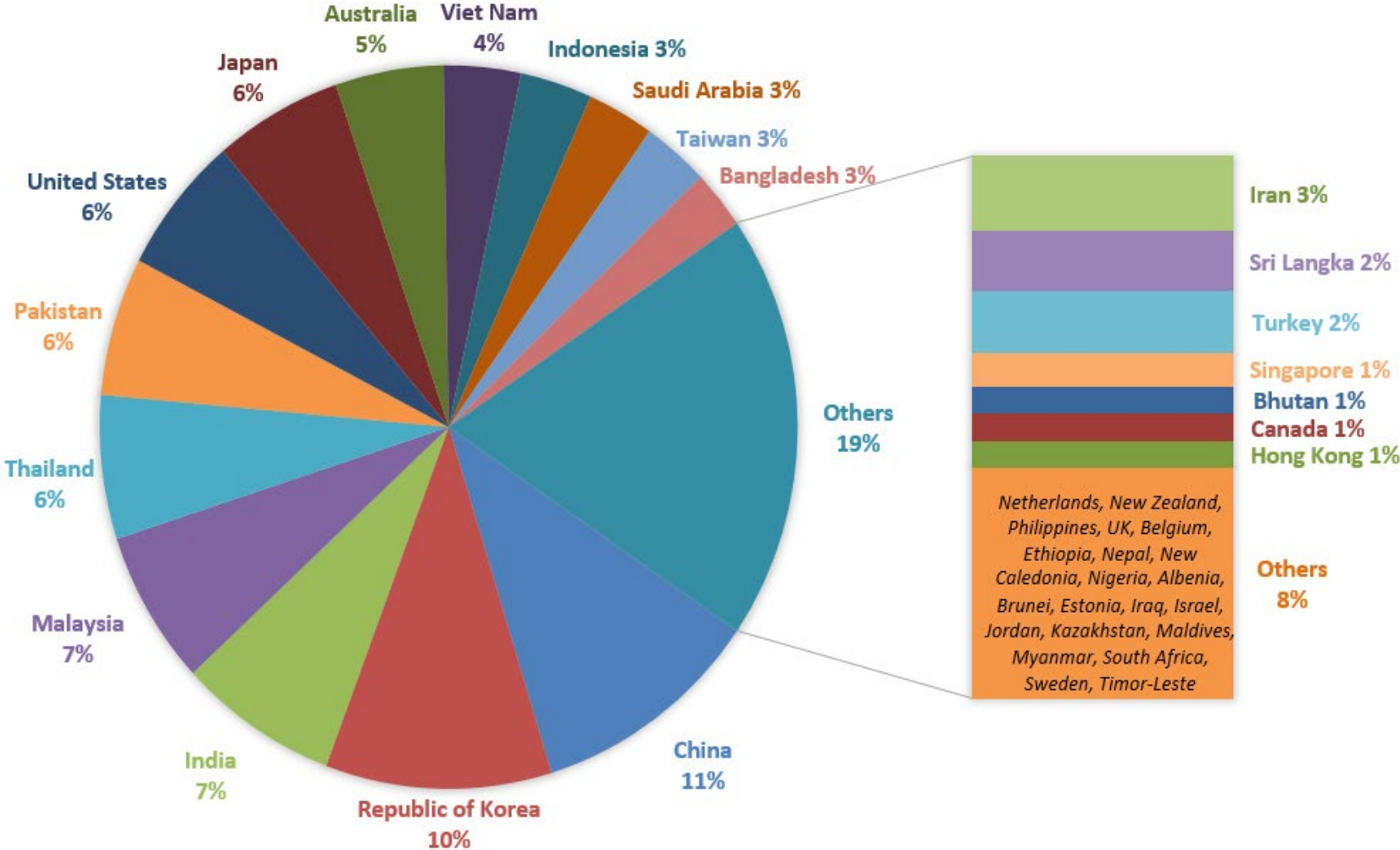
## 2. Manuscript Update

### 2.1 Total Submissions and Acceptance Rate

In 2018 YTD, we have received a total of 464 original submissions and the monthly submission is as per the table below.

Month	2016	2017	2018 YTD
January	57	38	88
February	56	83	103
March	72	64	87
April	52	44	70
May	61	72	61
June	59	39	55
July	66	66	-
August	61	48	-
September	32	51	-
October	59	58	-
November	61	47	-
December	57	75	-
Total	693	685	464

# MANUSCRIPT SUBMISSION BY COUNTRY



Total and original submission counts are based on the date manuscripts were submitted.

Acceptance rate is based on manuscripts that have received final decisions of accept or reject (does not include revisions).

Counts for acceptances, rejections, and acceptance ratios are based on the date the decision is made, not the date the manuscript was submitted.

	2013	2014	2015	2016	2017	2018 YTD
<b>Total</b>	1,363	1,068	742	813	791	520
<b>Original</b>	1,145	958	637	693	685	464
<b>Accept</b>	131	69	73	79	81	30
<b>Reject</b>	1,051	839	555	607	574	267
<b>Accept Ratio</b>	11%	8%	12%	12%	12%	10%

## 2.2 Rejection of Manuscripts: January to June 2018

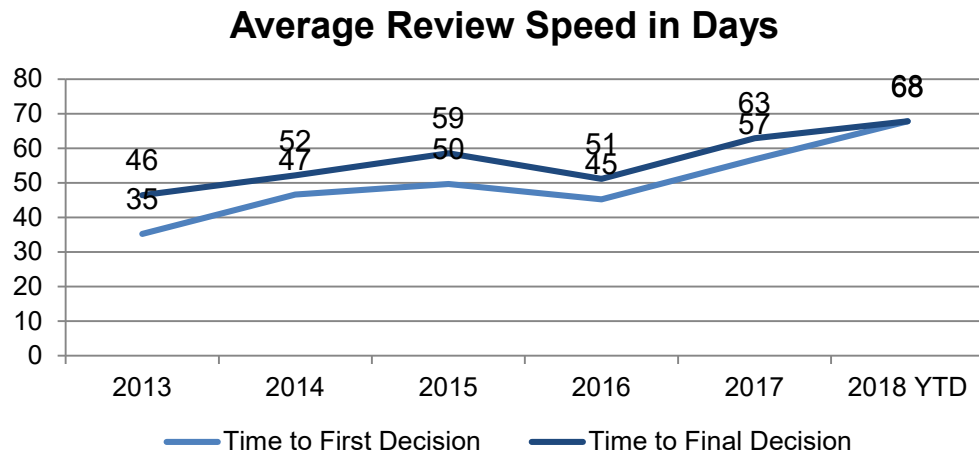
Initial screening of the submitted articles is done by the Editorial Board based on the appropriateness and relevance of the papers. Only quality papers are selected and sent for peer reviewing.

As shown in the table below, this year (from Jan to June 2018) we received a total of 520 papers. The total number of papers rejected is 267. Details are shown in the table below. **The Rejection Rate calculated is 51.3 %.**

### Rejection Rate for 2018 YTD (1<sup>st</sup> January to 30<sup>th</sup> June 2018)

Total number of manuscripts received	520
Manuscripts rejected due to inappropriateness	182
Manuscripts rejected after peer reviewing	85
Total number of manuscripts rejected	182 + 85 = 267
% Rejection Rate	$\frac{267}{520} \times 100 = \mathbf{51.3\%}$

## 2.3 Average Time to First Decision

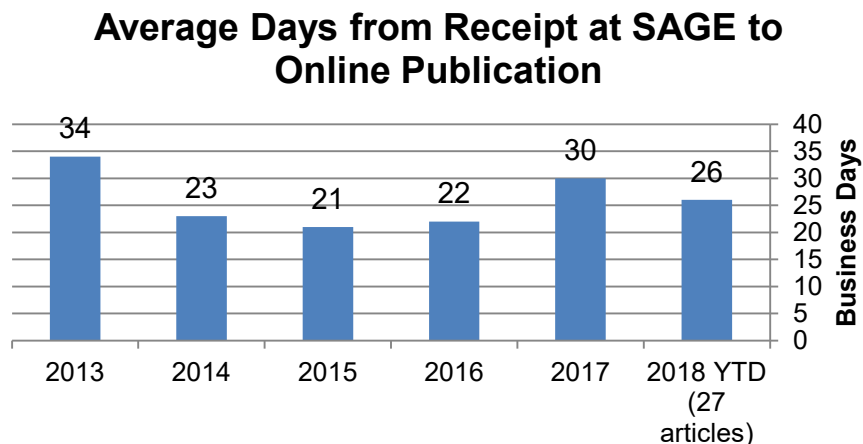


Time to First Decision is defined as all original submissions that received their first decision within each year, regardless of when the manuscripts were submitted. Revisions are not included.

Time to Final Decision is defined as all submissions including revisions that receive a final accept or reject decision within each year, regardless of when the manuscripts were submitted.

## 2.4 Average Time to Online First Publication

As of July 9, 2018, *Asia-Pacific Journal of Public Health* has 6 articles in its OnlineFirst queue, representing about 1 issue of content. The oldest article in the queue was published on April 18, 2018. These articles are “fully published,” that is, these articles are fully citable using the date of the manuscript's first online posting and the DOI.



## 2.5 Articles and Pages Published

The following table summarizes the number of issues and pages published in the past two volume years.

2018 YTD					
Volume	Issue	Cover Date	Research Articles Published	Pages Published	Page Budget
30	1	January	10	86	110
30	2	March	10	109	110
30	3	April	11	106	110
30	4	May	12	107	110
30	5	July	-	-	110
30	6	September	-	-	110
30	7	October	-	-	110
30	8	November	-	-	110
<b>Total for Volume Year</b>			<b>43</b>	<b>408</b>	<b>880</b>

2017					
Volume	Issue	Cover Date	Research Articles Published	Pages Published	Page Budget
29	1	January	12	92	110
29	2	March	9	72	110
29	2 Supplement		21	200	
29	3	April	8	80	110
29	4	May	10	98	110
29	5	July	11	121	110
29	5 Supplement		12	101	
29	6	September	7	68	110
29	7	October	12	90	110
29	8	November	9	72	110
<b>Total for Volume Year</b>			<b>111</b>	<b>693 + 301 Suppl</b>	<b>880</b>



The following table shows the top ten journal articles from 2015 and 2016 that were cited the most in 2017.

Title	Authors	Published Year	Vol	Iss	Total Cites in 2017
Adverse Childhood Experiences and the Health of University Students in Eight Provinces of Vietnam	Quynh Anh Tran; Dunne, Michael P.; Thang Van Vo; Ngoc Hoat Luu	2015	27	8	12
Increasing Incidence of Thyroid Cancer in Shanghai, China, 1983-2007	Wang, Youxin; Wang, Wei	2015	27	2	7
Factorial Validity and Reliability of the Malaysian Simplified Chinese Version of Multidimensional Scale of Perceived Social Support (MSPSS-SCV) Among a Group of University Students	Guan, Ng Chong; Seng, Loh Huai; Ann, Anne Yee Hway; Hui, Koh Ong	2015	27	2	7
Prevalence of and Risk Factors for Type 2 Diabetes Mellitus in Vietnam: A Systematic Review	Nguyen, Chung T.; Ngoc Minh Pham; Lee, Andy H.; Binns, Colin W.	2015	27	6	6
Socioeconomic Inequities in Health Care Utilization in China	Zhang, Xin; Wu, Qunhong; Shao, Yongxiang; Fu, Wenqi; Liu, Guoxiang; Coyte, Peter C.	2015	27	4	6
Human Leptospirosis in Malaysia: Reviewing the Challenges After 8 Decades (1925-2012)	Benacer, Douadi; Thong, Kwai Lin; Bin Verasahib, Khebir; Galloway, Renee L.; Hartskeerl, Rudy A.; Lewis, John W.; Zain, Siti Nursheena Mohd	2016	28	4	5
Exercise Is Medicine: Curbing the Burden of Chronic Disease and Physical Inactivity	Coombes, Jeff S.; Law, Jen; Lancashire, Bill; Fassett, Robert G.	2015	27	2	5
Health Literacy in Taiwan: A Population-Based Study	Van Tuyen Duong; Lin, I-Feng; Sorensen, Kristine; Pelikan, Juergen M.; Van den Broucke, Stephan; Lin, Ying-Chin; Chang, Peter Wushou	2015	27	8	5
Lung Cancer Mortality Among Women in Xuan Wei, China: A Comparison of Spatial Clustering Detection Methods	Lin, Hualiang; Ning, Bofu; Li, Jihua; Ho, Suzanne C.; Huss, Anke; Vermeulen, Roel; Tian, Linwei	2015	27	2	5
Soy and Soy Products Intake, All-Cause Mortality, and Cause-Specific Mortality in Japan: The Jichi Medical School Cohort Study	Yamasaki, Kyoko; Kayaba, Kazunori; Ishikawa, Shizukiyo	2015	27	5	5

### 3. Circulation and Readership

Average Number of Subscriptions by Type 2015 – 2018 YTD					
	2015	2016	2017	2018 YTD	Renewal Rate 2016-2017
Individuals	0	1	1	0	100%
Members	39	39	40	45	103%
Institutions (Direct), Traditional	46	40	43	36	108%
Institutions (Direct), Migrated	5	5	5	5	100%
Institutions (Direct), Total	51	45	48	41	107%
Site License	7	8	6	8	75%
Package	3,071	3,138	3,116	2,854	99%
Developing World	5,047	5,223	5,223	5,223	100%
<b>Total</b>	<b>8,215</b>	<b>8,454</b>	<b>8,434</b>	<b>8,171</b>	<b>100%</b>

### 4. Online Usage and Downloads

Table below shows the distribution of APJPH visitors from Jan-June 2018. Highest number of visits was captured in the United States, with 16, 281 visits.

Geographic Location of Visitors: January 2018 – June 2018*					
	Country/Territory	Visits		Country/Territory	Visits
1	United States	16281	11	Japan	2679
2	Malaysia	11785	12	Thailand	2642
3	India	8285	13	Pakistan	2044
4	Australia	7645	14	Singapore	1671
5	United Kingdom	5441	15	Iran	1562
6	Philippines	4806	16	Nigeria	1505
7	Indonesia	4086	17	Bangladesh	1328
8	China	2984	18	Taiwan	1205
9	South Korea	2957	19	Turkey	1191

<b>10</b>	Canada	2751	<b>20</b>	Hong Kong	1179
<i>Source: Google Analytics *numbers are estimates</i>					

### GOOGLE ANALYTICS TOP REFERRING TRAFFIC SOURCES

Top Referring Traffic Sources: January 2018 - June 2018					
	Source	Visits		Source	Visits
<b>1</b>	ncbi.nlm.nih.gov	10814	<b>11</b>	scholar.google.ca	374
<b>2</b>	scholar.google.com	7266	<b>12</b>	scholar.google.co.kr	324
<b>3</b>	scholar.google.com.ph	1232	<b>13</b>	scholar.google.co.th	279
<b>4</b>	scholar.google.com.au	1126	<b>14</b>	m.facebook.com	275
<b>5</b>	scholar.google.co.in	1010	<b>15</b>	scholar.google.com.hk	187
<b>6</b>	scholar.google.com.my	790	<b>16</b>	scholar.google.com.sg	183
<b>7</b>	scholar.google.co.uk	784	<b>17</b>	scholar.google.com.tw	178
<b>8</b>	scholar.google.co.id	593	<b>18</b>	apps.webofknowledge.com	168
<b>9</b>	apacph.org	450	<b>19</b>	scholar.google.com.tr	161
<b>10</b>	scholar.google.com.pk	392	<b>20</b>	scholar.google.com.br	152
<i>Source: Google Analytics</i>					

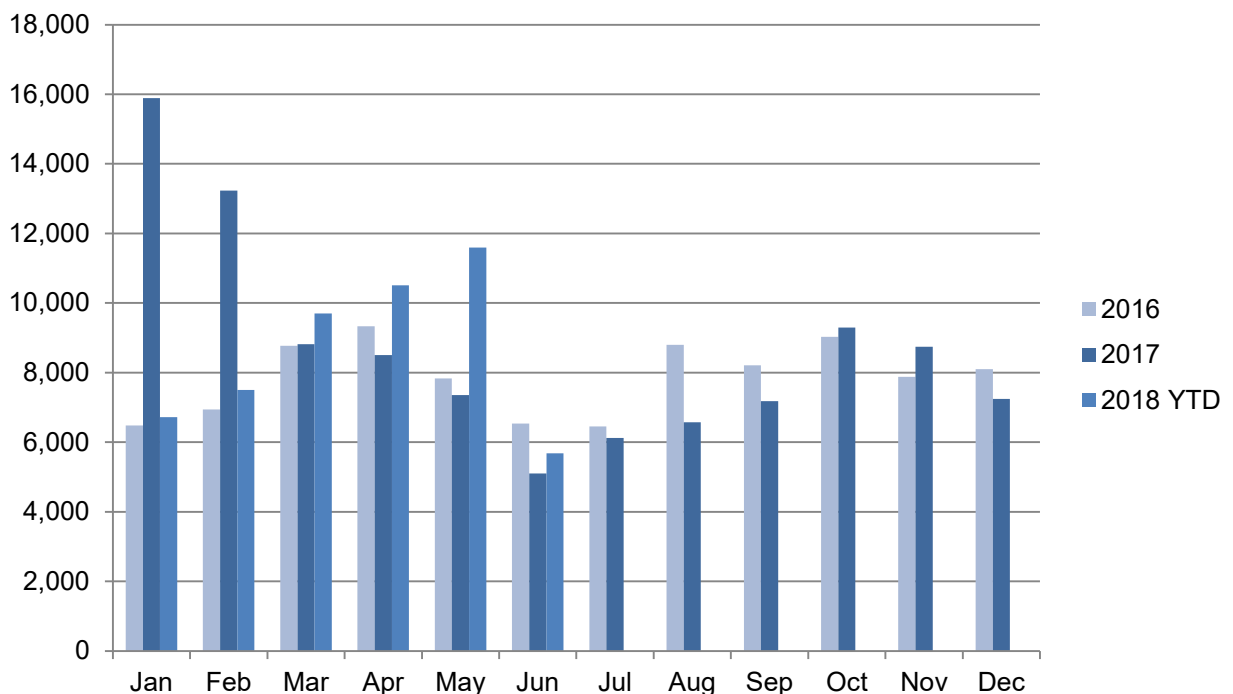
### GOOGLE ANALYTICS MOBILE DISTRIBUTION OF USAGE

Mobile Distribution of Usage: January 2018 – June 2018					
	Device Type	Visits		Device Type	Visits
<b>1</b>	Apple iPhone	3975	<b>6</b>	Samsung SM-G610F J7 Prime	174
<b>2</b>	(not set)	1211	<b>7</b>	Xiaomi Redmi Note 4	166
<b>3</b>	Apple iPad	1104	<b>8</b>	OPPO A1601 F1s	129
<b>4</b>	Microsoft Windows RT Tablet	450	<b>9</b>	OPPO A37f	117
<b>5</b>	Samsung SM-T815N0 Galaxy Tab S2 9.7	186	<b>10</b>	Vivo Y53 1606	110
<i>Source: Google Analytics</i>					

*Asia-Pacific Journal of Public Health* has 51,702 full-text downloads in 2018 YTD (through the end of June). This is a 12.2% decrease over 58,908 full-text downloads through the end of June 2017.

Full-Text Downloads			
	2016	2017	2018 YTD
January	6,480	15,893	6,717
February	6,943	13,236	7,500
March	8,770	8,814	9,704
April	9,328	8,504	10,510
May	7,833	7,357	11,591
June	6,532	5,104	5,680
July	6,456	6,123	-
August	8,801	6,572	-
September	8,210	7,180	-
October	9,026	9,293	-
November	7,877	8,743	-
December	8,097	7,246	-
<b>Total</b>	<b>94,353</b>	<b>104,065</b>	<b>51,702</b>
*Full-text downloads include both HTML and PDF article usage			

### Full-Text Downloads by Year



The following table shows the ten articles that were downloaded the most from January 2018 through June 2018 on the SAGE Journals platform.

Top 10 Most Downloaded Articles in 2018 YTD	
Total Downloads	Article
277	Colin Binns, Wah Yun Low <b>Barking Our Way Into the Year of the Dog: Public Health Benefits and Challenges</b> Vol. 30, No. 1, January 2018: 4
253	Stephanie E. Armes, Charity M. Somo, Sareth Khann, Desiree M. Seponski, Cindy J. Lahar, Sovandara Kao, Tanja Schunert <b>Mental Health Indicators of Suicide in Cambodian Women</b> Vol. 30, No. 1, January 2018: 7
201	Colin Binns, Wah Yun Low <b>The Emerging Silver Society in the Asia Pacific Region</b> Vol. 30, No. 2, March 2018: 92
184	Junmin Wei, Linlin Fan, Yuhui Zhang, Shirley Li, Jamie Partridge, Ling Claytor, Suela Sulo <b>Association Between Malnutrition and Depression Among Community-Dwelling Older Chinese Adults</b> Vol. 30, No. 2, March 2018: 107
179	Susi Ari Kristina, Dwi Endarti, Chairun Wiedyaningsih, Arifina Fahamsya, Nurul Faizah <b>Health Care Cost of Noncommunicable Diseases Related to Smoking in Indonesia, 2015</b> Vol. 30, No. 1, January 2018: 29
167	Xihe Zhu, Justin A. Haegele, Yan Tang, Xueping Wu <b>Prevalence and Demographic Correlates of Overweight, Physical Activity, and Screen Time Among School-Aged Children in Urban China: The Shanghai Study</b> Vol. 30, No. 2, March 2018: 118
160	Kana Kazawa, Md Moshur Rahman, Michiko Moriyama <b>An Investigation of Factors Influencing High Usage of Medical and Long-Term Care Services in an Aging Society in Japan</b> Vol. 30, No. 2, March 2018: 95
144	Colin Binns, Wah Yun Low <b>Controlling Worms Needs Traditional Public Health Programs</b> Vol. 30, No. 3, April 2018: 204
138	Sébastien Boyer, Sergio Lopes, Didot Prasetyo, John Hustedt, Ay Sao Sarady, Dyna Doum, Sony Yean, Borin Peng, Sam Bunleng, Rithea Leang, Didier Fontenille, Jeffrey Hii <b>Resistance of <i>Aedes aegypti</i> (Diptera: Culicidae) Populations to Deltamethrin, Permethrin, and Temephos in Cambodia</b> Vol. 30, No. 2, March 2018: 158

<b>126</b>	Susan Park, Sunmi Pi, Jinseub Hwang, Jae-Heon Kang, Jin-Won Kwon <b>Effects of Initial Body Mass Index and Weight Change on All-Cause Mortality: A 10-Year Cohort Study in Korea</b> Vol. 30, No. 3, April 2018: 217
------------	--

## 5. Supplement Issues

In 2017, we have published two Supplement Issues (details below), in addition to 8 regular issues published in: Jan, March, April, May, July, September, October, and November.

Name of Supplement	Publication Date	Sponsors	Status
Fukushima Daiichi Nuclear Power Plant Accident: Health consequences, lessons learnt and future directions	March 2017	Fukushima Medical University	Published
Health and Healthcare Transitions in Vietnam	May 2017	Hanoi University of Public Health	Published
National E-cigarette Survey 2016	January 2019	International Islamic University Malaysia	Work in progress

## 6. Altmetric

Alternative metrics are becoming increasingly important in scholarly publishing. An Altmetric score measures online mentions of an individual academic journal article across social media, news outlets, blog sites and reference sites. The score is a helpful measure of online engagement and visibility, but it is not directly linked to citations or usage. The score is derived from an automated algorithm, and represents a weighted count of research outputs reflecting the relative reach of each type of source.

### Top Altmetric Scores for APJPH

Total Altmetric Score	Article Title
<b>55</b>	A Mock Randomized Controlled Trial With Audience Response Technology for Teaching and Learning Epidemiology
<b>38</b>	Psychosocial Issues Related to Thyroid Examination After a Radiation Disaster
<b>30</b>	A New Japanese Vegetarian Food Guide

22	Climate change and farmers' mental health: risks and responses.
15	Relationship between cervical spine injury and helmet use in motorcycle road crashes.

## 7. Editor's Choice

Following the meeting with SAGE's associate in APACPH 2017, the editorial team has decided to introduce Editor's Choice articles. One article will be selected from each issue beginning January 2017 and will be featured as the Editor's Choice article. These articles will be given free access for a limited time (1 month). Links to the free access will be shared in our social media accounts (Facebook and Twitter), university email loops, and notifications will be sent to the authors (to share the free access with their contacts).

The idea of an Editor's Choice is to make a personalised reading recommendation based on what the editor feels is an important topic apart from the latest articles, most read articles, and most cited articles which are highlighted in the journal's website.

These articles have been featured as Editor's Choice so far:

2017 Issues	Title of Articles	Scope of Public Health
January	Quality of Life Among Senior Citizens in Bhutan: Association with Adverse Life Experiences, Chronic Diseases, Spirituality, and Social Connectedness	Older Adult
March	Dietary Guidelines for the Asia Pacific Region: Report of the Asia Pacific Academic Consortium for Public Health Workshop 2016	Nutrition
April	Premature Mortality from Noncommunicable Diseases in the Federated States of Micronesia	Noncommunicable Disease
May	The Association of Workplace Exposures on Quality of Life in Small and Medium Enterprises Workers: A Cross-Sectional Study in Four ASEAN Countries	Quality of Life
July	Commercial Sexual Behaviors Among Male Rural-to-Urban Migrants in Western China: Implications for HIV Prevention	Infectious Disease
January	Three Decades of Dengue Surveillance in Five Highly Endemic South East Asian Countries: A Descriptive Review	Epidemiology

Currently, the Editor and Editorial Assistant have been creating write-up, infographics, and illustrations to introduce the Editor's Choice articles on these platforms. The future plan is to

come up with a guideline to enable authors of the selected articles to come up with own write-ups. The guideline will outline the following criteria: the mode (write-up/ podcast/ videos); length/ duration and etc.

## 8. Social Media

Following the meeting with SAGE’s associate in APACPH 2017, APJPH also has ventured into social media, creating accounts in two platforms: Facebook and Twitter in September 2017 to reach out to readers and disseminate information quickly. These platforms are also being used to share the Editor’s Choice articles. The Facebook link and Twitter handle are as follows:

Facebook: <https://www.facebook.com/apjph/>

Twitter: @APJPH\_



Figure 1: Screenshot of APJPH Facebook page





Figure 2: Screenshot of APJPH Twitter account

## 9. Journal Funding

The invoice of USD 20,000 for 2018 was handed to APACPH Treasurer, Prof Chiou Hung-Yi, during the APACPH Conference held in August 2017 in Incheon, Korea. We have received the funding in December 2017.

## 10. Other Matters

### 10.1 APJPH access for APACPH members

Members of APACPH institutions have been asking about access to APJPH. SAGE has provided the instructions below. This is the process that is in place for all APACPH members, whether they are individuals who are APACPH members in their own right, or individuals who are trying to access the journal because their institution is an APACPH member. Both individual and institutional APACPH members would access the journal in this way. Since the online platform changed, each member needs to register and create a personal account with SAGE Journals.

APACPH Activation Instructions:

1. Please register your personal email with SAGE Journals at the following link:  
<https://journals.sagepub.com/action/registration>

2. Once registered please click the below Token URL link to gain access to the journal (one-time process):

Token URL: <http://journals.sagepub.com/token/FV9bPI7XVYWuUZuAiErR/Asia-Pacific+Academic+Consortium+for+Public+Health>

3. Going forward please sign in with e-mail and password here  
<http://journals.sagepub.com/>. Once signed please “Search all SAGE Journals” with Asia Pacific Journal of Public Health which will then give you full access.

## **10.2 Open Access Publishing: SAGE Choice**

SAGE offers authors of primary research articles the option to make them freely available upon publication in any SAGE journal. The SAGE Choice publishing option enables authors to comply with funding body requirements, where publishing research papers Open Access is a stipulation of funding, such as in the case for the NIH/Wellcome Trust.

Starting in the calendar year 2018, the SAGE Choice price for APJPH has been reduced from the \$3,000 standard price, to \$1,500.